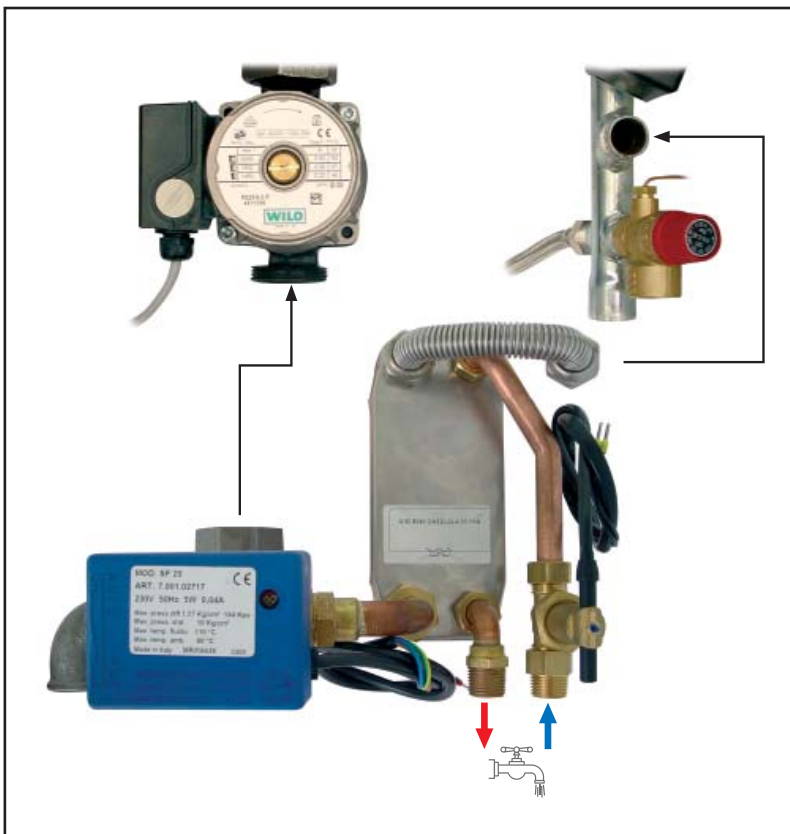
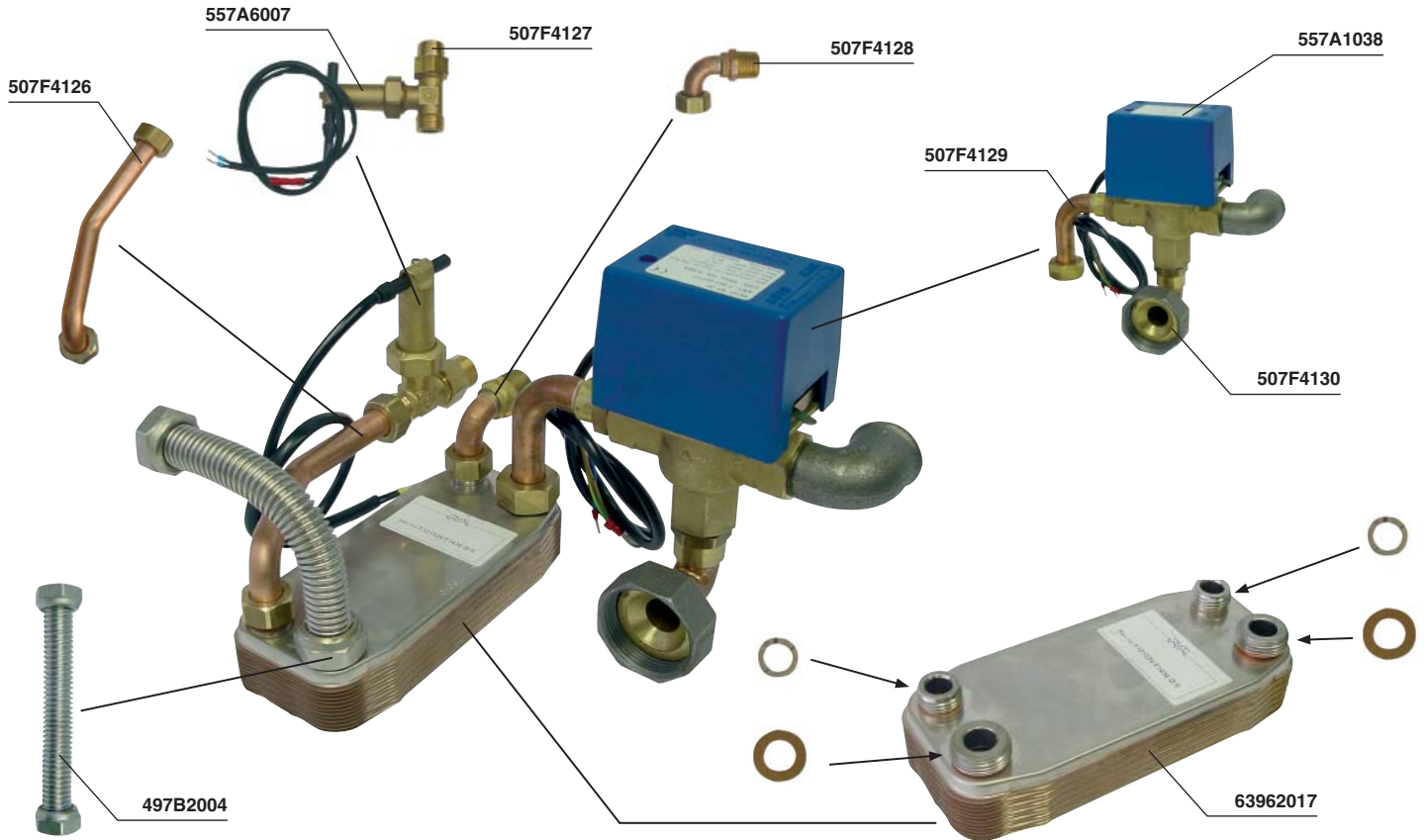



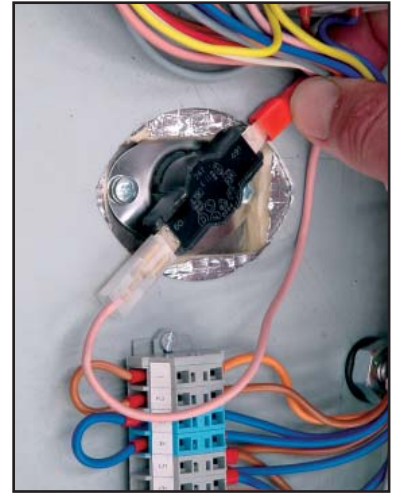
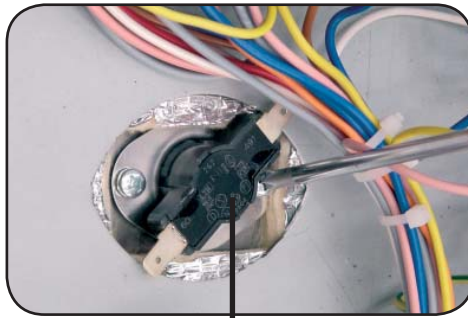
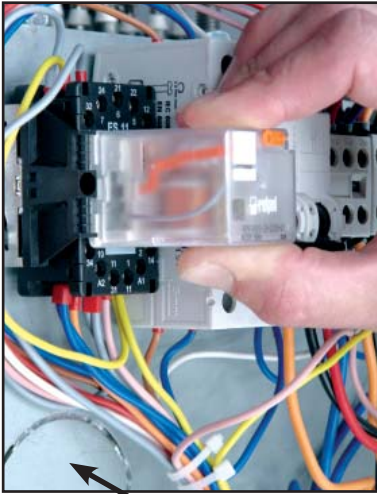


- EN** • *DHW kit for wall hung electric boiler*
- FR** • *Kit sanitaire pour chaudières électriques murales*
- NL** • *Sanitaire kit voor murale elektrische verwarmingsketels*
- ES** • *Kit sanitario para calderas eléctricas mural*
- IT** • *Kit sanitario per caldaie elettriche murale*
- DE** • *Sanitärer Satz für elektrische Heizkessel manuerartig*



	 °C	 °C	 L / min.
Type 09	10°C	40°C	4 L
Type 15	10°C	40°C	7 L
Type 22	10°C	40°C	10 L
Type 28	10°C	40°C	14 L
Type 36	10°C	40°C	14 L



13 - 14

Blue / Bleu / Blauw / Azul / Blu / Blau ➡ **18**
 Brown / Marron / Bruin / Marrón / Marrone / Braun ➡ **17**

⊕ ➡ ⊕